

**RESTRICTED USE PESTICIDE**  
**DUE TO TOXICITY TO AQUATIC INVERTEBRATES**

For retail sale to and use only by Certified Applicators or persons under their direct supervision and only for those uses covered by the Certified Applicator's certification.

**GROUP 2B INSECTICIDE**



**Insecticide**

FOR PEST CONTROL OPERATORS AND COMMERCIAL USE ONLY

ACTIVE INGREDIENT

Fipronil: 5-amino-1-(2, 6-dichloro-4-(trifluoromethyl) phenyl)-4-((1,R,S)-(trifluoromethyl)sulfinyl)-1-H-pyrazole-3-carbonitrile..... 0.1%

OTHER INGREDIENTS .....99.9%

TOTAL: 100.0%

EPA Reg. No. 101563-19

EPA Est. No. 67572-GA-1

See Panel for First Aid Instructions and for Complete Precautionary Statements and Directions for Use.

KEEP OUT OF REACH OF CHILDREN

CAUTION  
PRECAUCIÓN

Si usted no entiende la etiqueta, busque a alguien para que se la explique a usted en detalle. (If you do not understand this label, find someone to explain it to you).

For MEDICAL and TRANSPORTATION Emergencies ONLY Call 24 Hours A Day

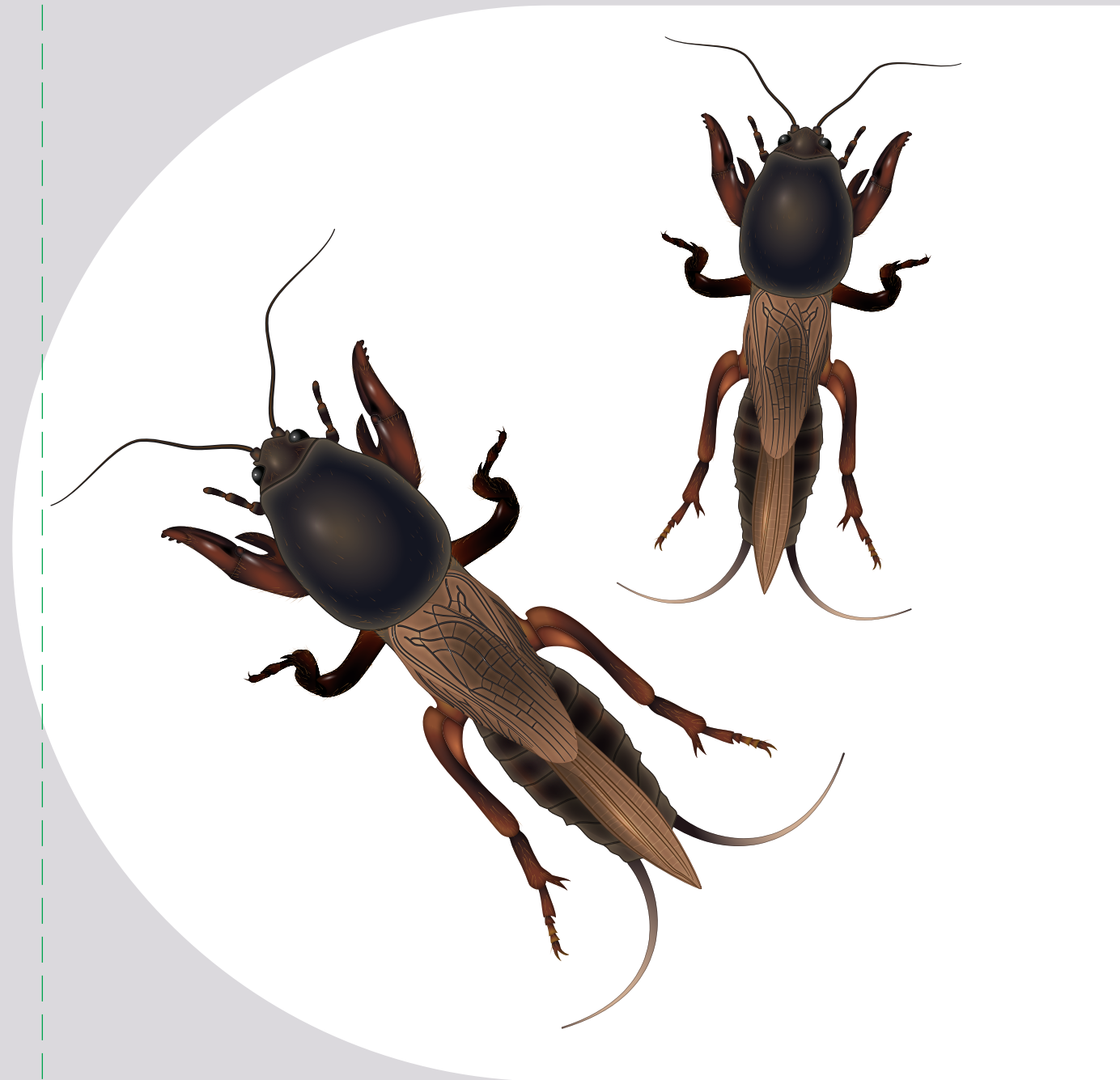
1-800-334-7577

For PRODUCT USE Information Call 1-800-331-2867

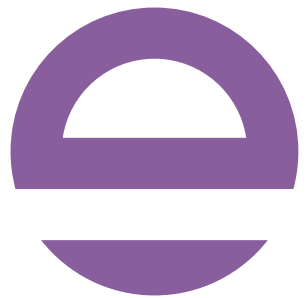
FIRST AID	
If on skin or clothing:	<ul style="list-style-type: none"><li>• Take off contaminated clothing.</li><li>• Rinse skin immediately with plenty of water for 15 - 20 minutes.</li><li>• Call a poison control center or doctor for treatment advice.</li></ul>
If swallowed:	<ul style="list-style-type: none"><li>• Call a poison control center or doctor immediately for treatment advice.</li><li>• Have a person sip a glass of water if able to swallow.</li><li>• Do not induce vomiting unless told to do so by a poison control center or doctor.</li><li>• <del>Do not give anything by mouth to an unconscious person.</del></li></ul>
If in eyes:	<ul style="list-style-type: none"><li>• Hold eye open and rinse slowly and gently with water for 15 - 20 minutes. Remove contact lenses, if present, after the first 5 minutes, then continue rinsing eye.</li><li>• Call a poison control center or doctor for treatment advice.</li></ul>
Have the product container or label with you when calling a poison control center or doctor, or going for treatment.	
<b>NOTE TO PHYSICIAN:</b> There is no specific antidote. All treatment should be based on observed signs and symptoms of distress in the patient.	

**SKU # 79893817**  
79994923G 240228AV1  
Net Weight:  
**50 Pounds**

**envu**<sup>TM</sup>



**Mole Crickets**



CHIPCO<sup>®</sup>  
CHOICE

**Insecticide**



## PRECAUTIONARY STATEMENTS

### HAZARD TO HUMANS AND DOMESTIC ANIMALS

#### CAUTION

Harmful if absorbed through the skin. Causes eye irritation. Avoid contact with skin, eyes, or clothing. Wash thoroughly with soap and water after handling.

**SYMPTOMS OF POISONING:** In severe cases of overexposure by oral ingestion, lethargy, muscle tremors, and, in extreme cases, possibly convulsions, may occur.

#### PERSONAL PROTECTIVE EQUIPMENT (PPE)

Applicators, mixers, loaders, and persons cleaning application equipment must wear long sleeved shirt and long pants, waterproof gloves, and shoes plus socks.

Follow manufacturer's instructions for cleaning and maintaining PPE. If no such instructions for washables exist, use detergent and hot water. Keep and wash PPE separately from other laundry.

When handlers use closed systems or enclosed cabs, in a manner that meets the requirements listed in the Worker Protection Standard (WPS) or agricultural practices (40 CFR 170.240 (d) (4-6)), the handler PPE requirement may be reduced or modified as specified in the WPS. Important: When reduced PPE is worn because a closed system is being used, handlers must be provided all PPE specified above for applicators and other handlers, and have such PPE immediately available for use in an emergency, such as a spill or equipment breakdown.

#### USER SAFETY RECOMMENDATIONS

Users should wash hands before eating, drinking, chewing gum, using tobacco, or using the toilet.

Remove clothing immediately if pesticide gets inside. Then wash body thoroughly and put on clean clothing.

Remove PPE immediately after handling this product. Wash the outside of gloves before removing. As soon as possible, wash thoroughly and change into clean clothing.

#### ENVIRONMENTAL HAZARDS

This pesticide is toxic to birds, fish, aquatic and estuarine (tidewater dwelling) invertebrates. Do not apply directly to water or to areas where surface water is present or to intertidal areas below the mean high water mark. Runoff from treated areas may be hazardous to aquatic organisms in neighboring areas. Cover, incorporate, or clean up granules that are spilled. Do not contaminate water when disposing of equipment washwater or rinsate.

#### FOR BROADCAST APPLICATIONS:

Do not apply within 15 feet of bodies of fresh water: lakes, reservoirs, rivers, permanent streams, marshes, natural ponds, and commercial fishponds. A 15 foot buffer of uniform groundcover must exist between application zone and bodies of freshwater (uniform ground cover is defined as land which supports vegetation of greater than 2 inches throughout).

Do not apply within 60 feet of estuarine bodies of water. Estuarine water bodies are brackish, tidal water such as bays, mouths of rivers, salt marshes, and lagoons.

In order to reduce risk to birds, ensure that the application is spread evenly over the treatment area.

#### Florida Applications:

**Do not use this product** within 500 feet of areas occupied by the threatened Florida scrub jay, blue tail mole skink, or by sand skink. In addition, for the protection of the threatened bluetail mole skink and sand skink, apply only to turf grass and allow at least a 30-foot untreated buffer of turf grass when adjacent to scrub habitat (i.e. xeric upland) in the following counties: Highlands, Lake, Marion, Orange, Osceola, Polk, and Putnam. For guidance consult the Florida Department of Agriculture and Consumer Services.

#### AGRICULTURAL USE REQUIREMENTS

Use this product in accordance with its labeling and with the Worker Protection Standard, 40 CFR 170. This Standard contains requirements for the protection of agricultural workers on farms, forests, nurseries, and greenhouses, and handlers of agricultural pesticides. It contains requirements for training, decontamination, notification, and emergency assistance. It also contains specific instructions and exceptions pertaining to the statements on this label about personal protective equipment (PPE), notifications to workers and restricted-entry intervals. The requirements in this box only apply to sodfarm uses of this product that are covered by the Worker Protection Standard.

Do not enter or allow worker entry into treated areas during the restricted entry interval (REI) of 24 hours.

PPE required for entry to treated areas that is permitted under the Worker Protection Standard and that involves contact with anything that has been treated, such as plants, soil, or water is:

-coveralls -waterproof gloves -shoes plus socks

#### NON AGRICULTURAL USE REQUIREMENTS

The requirements in this box apply to uses of this product that are not within the scope of the Worker Protection Standard (WPS) for agricultural pesticides (40CFR Part 170). The WPS applies when this product is used to produce agricultural plants on farms, forests, nurseries or greenhouses.

Always wear protective clothing and use appropriate equipment during application and handling. Avoid contact with granules. Avoid breathing dust.

DIRECTIONS FOR USE  
RESTRICTED USE PESTICIDE

It is a violation of Federal Law to use this product in a manner inconsistent with its labeling  
Read entire label before using this product.

Do not apply this product in a way that will contact workers or other persons, either directly or through drift. Only protected handlers may be in the area during application. For any requirements specific to your State or Tribe, consult the agency responsible for pesticide regulation.

FOR USE ON TURFGRASS AND LANDSCAPE BEDS

PRODUCT RESTRICTIONS

- Always wear protective clothing and use appropriate equipment during application and handling.
- Do not apply to pastures or grazing lands.

PRODUCT PRECAUTIONS

- Apply this pesticide when the potential for drift to nearby bodies of water is minimal (wind speed is 10 mph or less and the wind is blowing away from the body of water).
- Avoid contact with granules.
- Avoid breathing dust.

APPLICATION INFORMATION

Apply using slit-placement equipment or broadcast application equipment.

PRODUCT INFORMATION

Slit application of CHIPCO® CHOICE™ Insecticide is intended for long-term control of mole crickets. Broadcast application of CHIPCO CHOICE Insecticide is intended for long-term control of Imported Fire Ants *Solenopsis* spp. Soil-directed air pressure application of CHIPCO CHOICE is intended for long term control of mole crickets and imported fire ants *Solenopsis* spp.

Do not apply in combination with other materials i.e. pesticides, fertilizers, or other biologically active materials without first evaluating compatibility or consulting with the manufacturer.

No phytotoxic response on any turfgrass species has been observed to date.

RESISTANCE MANAGEMENT

For resistance management, CHIPCO® CHOICE™ contains a Group 2B insecticide. Any insect population may contain individuals naturally resistant to CHIPCO® CHOICE™ and other Group 2B insecticides. The resistant individuals may dominate the insect population if this group of insecticides are used repeatedly in the same fields. Appropriate resistance-management strategies should be followed.

To delay insecticide resistance, take the following steps:

- Rotate the use of CHIPCO® CHOICE™ or other Group 2B insecticides within a growing season, or among growing seasons, with different groups that control the same pests.
- Adopt an integrated pest management program for insecticide use that includes scouting, uses historical information related to pesticide use, record keeping, and which considers cultural, biological and other chemical control practices.
- Monitor after application for unexpected target pest survival. If the level of survival suggests the presence of resistance, consult with your local university specialist or certified pest control advisor.
- Contact your local extension specialist or certified crop advisors for any additional pesticide resistance-management and/or IPM recommendations for the specific site and pest problems in your area.
- For further information or to report suspected resistance contact your Environmental Science US LLC representative or call 1-800-331- 2867.

SPECIFIC USE DIRECTIONS

Use the slit application for long term mole cricket control and the broadcast application for long term Imported Fire Ants *Solenopsis* spp. control. Soil-directed air pressure application can be used for long term control of mole cricket and imported fire ants. Carefully calibrate and adjust equipment prior to application in order to ensure that the proper rate is applied and that product is accurately placed.

**California:** This product can only be used in the Coachella Valley. Applications can only be made from April through September.

SLIT-PLACEMENT TREATMENT

For mole cricket control only, do not apply more than 25 pounds of product per acre (0.025 lb ai/A) per application. Do not exceed 50 pounds of product per acre (0.05 lb ai/A) per year.

		APPLICATION RATE OF CHIPCO CHOICE INSECTICIDE		
SITES	PESTS CONTROLLED	Pounds Product Per Acre	Ounces Product Per 1,000 Sq Ft	APPLICATION DIRECTIONS
Turfgrass Golf turf Sports fields Commercial lawns Cemeteries Parks Campsites Recreational areas Home Lawns School grounds Sodfarms Landscape beds	Mole Cricket ( <i>Scapteriscus</i> spp.)	12.5 to 25.0	4.6 to 9.4	Apply using slit-placement application equipment. Depth of the slit should be targeted at the thatch/soil interface. Make applications to control overwintering adult mole crickets, newly hatched nymphs, or when mole cricket populations cause unacceptable damage to turfgrass. Use higher rate against heavy insect infestations or older insect life stages. Repeat application should be directed at heavy mole cricket infestations causing unacceptable turfgrass damage.

BROADCAST TREATMENT

For **Imported Fire Ants *Solenopsis* spp. control**, this product can only be used in the USDA APHIS Imported Fire Ant Quarantine area within the following states and Puerto Rico:

Alabama	Florida	Mississippi	Oklahoma	Texas
Arkansas	Georgia	New Mexico	South Carolina	Virginia
California (Coachella Valley Only)*	Louisiana	North Carolina	Tennessee	

Before using this product, refer to the USDA APHIS Imported Fire Ant Quarantine web site:

[http://www.aphis.usda.gov/plant\\_health/plant\\_pest\\_info/fireants/downloads/fireant.pdf](http://www.aphis.usda.gov/plant_health/plant_pest_info/fireants/downloads/fireant.pdf) or search the APHIS web site by zip code to determine if the area to be treated is located within the APHIS Imported Fire Ant Quarantine area.

[http://www.aphis.usda.gov/plant\\_health/plant\\_pest\\_info/fireants?fireantquery.php](http://www.aphis.usda.gov/plant_health/plant_pest_info/fireants?fireantquery.php). If the zip code for the area to be treated does not appear in the APHIS Imported Fire Ant Quarantine zone, you must notify and consult with the county's extension agent prior to treating.

Consult your State or Federal plant protection inspector or your county agent for assistance regarding exact areas under regulation and requirements for moving regulated articles.

Make application with broadcast equipment that is capable of applying 12.5 pounds of product per acre.

Do not apply more than 1 application per year of 12.5 pounds of product per acre. Two applications (12.5 lbs/A per application) may only be used on sodfarms within the USDA APHIS Quarantine areas. Do not make more than one application per year of 0.0125 lbs of fipronil/A. Two applications of 0.0125 lbs fipronil/A may be used as a broadcast application for the control of Imported Fire Ants *Solenopsis* spp. on sodfarms within the USDA APHIS Quarantine areas.

Calibrate and adjust equipment prior to application to ensure that the proper rate of product will be applied.

**\*California:** This product can only be used in the Coachella Valley. Applications can only be made from April through September.

**The primary purpose of the broadcast application treatment is for Imported Fire Ants *Solenopsis* spp. control.**

			APPLICATION RATE OF CHIPCO CHOICE INSECTICIDE		
SITES	PESTS CONTROLLED	APPROXIMATE LENGTH OF CONTROL	POUNDS PRODUCT PER ACRE	OUNCES PRODUCT PER 1,000 SQ FT	APPLICATION DIRECTIONS
<b>Turfgrass</b> Golf turf Sports fields Commercial lawns Cemeteries Parks Campsites Recreational areas Home Lawns School grounds Sodfarms <b>Landscape beds</b>	Imported Fire Ants [Solenopsis spp.]	1 year	12.5	4.6	<b>Imported Fire Ants Solenopsis spp.:</b> Make applications to control existing Imported Fire Ant Solenopsis spp. populations and/or to exclude Imported Fire Ant Solenopsis spp. populations. For best results, water or irrigate treated turf after application. Do not broadcast over impervious surfaces such as but not limited to paved or concrete roads, sidewalks, driveways, walkways, nor broadcast near any storm drains. In areas within the prescribed buffer zone for estuarine or fresh bodies of water as stated in the Environmental Hazards section of this label, applicators may use Maxforce® FC Fire Ant Bait (EPA Reg. No. 101563-III). Refer to the Maxforce® FC Fire Ant Bait label for application information.

When treating for Imported Fire Ants Solenopsis spp. the following pests will be controlled for a limited time:

PESTS CONTROLLED	APPROXIMATE LENGTH OF CONTROL
Mole Cricket ( <i>Scapteriscus spp.</i> )	4 months
Nuisance ants (excluding carpenter, harvester and pharaoh ants) [ <i>Lasius neoniger</i> ]	3 months
Fleas [ <i>Ctenocephalides spp.</i> ]	1 month
Ticks [ <i>Dermacentor spp.</i> , <i>Rhipicephalus sp.</i> , <i>Ixodes spp.</i> ]	1 month

### SOIL-DIRECTED AIR PRESSURE APPLICATION TREATMENT

Soil-directed air pressure application equipment should be capable of delivering the application rate precisely. It should have closely aligned pressurized tubes positioned just above the turfgrass to ensure accurate coverage. The pressurized equipment should be calibrated to allow the Chipco Choice Insecticide granular product placement to target the thatch/soil interface.

For mole cricket control, do not apply more than 25 pounds of product per acre (0.025 lb ai/A) per application. Do not exceed 50 pounds of product per acre (0.05 lb ai/A) per year.

		APPLICATION RATE OF CHIPCO CHOICE INSECTICIDE		
SITES	PESTS CONTROLLED	POUNDS PRODUCT PER ACRE	OUNCES PRODUCT PER 1,000 SQ FT	APPLICATION DIRECTIONS
<b>Turfgrass</b> Golf turf Sports fields Commercial lawns Cemeteries Parks Campsites Recreational areas Home Lawns School grounds Sodfarms <b>Landscape beds</b>	Mole Cricket ( <i>Scapteriscus spp.</i> )	12.5 to 25.0	4.6 to 9.4	When using Soil-Directed Air Pressure Application equipment, calibrate the tube height and tube air pressure just high enough to gently lift and separate the grass leaf blades to target the product placement on the thatch/soil interface. Make applications to control overwintering adult mole crickets, newly hatched nymphs, or when mole cricket populations cause unacceptable damage to turfgrass. Use higher rate against heavy insect infestations or older insect life stages. Repeat application should be directed at heavy mole cricket infestations causing unacceptable turfgrass damage.

For **Imported Fire Ants Solenopsis spp. control**, this product can only be used in the USDA APHIS Imported Fire Ant Quarantine area within the following states and Puerto Rico:

Alabama	Florida	Mississippi	Oklahoma	Texas
Arkansas	Georgia	New Mexico	South Carolina	Virginia
California (Coachella Valley Only)*	Louisiana	North Carolina	Tennessee	

Before using this product, refer to the USDA APHIS Imported Fire Ant Quarantine web site:  
[http://www.aphis.usda.gov/plant\\_health/plant\\_pest\\_info/fireants/downloads/fireant.pdf](http://www.aphis.usda.gov/plant_health/plant_pest_info/fireants/downloads/fireant.pdf) or search the APHIS web site by zip code to determine if the area to be treated is located within the APHIS Imported Fire Ant Quarantine area.  
[http://www.aphis.usda.gov/plant\\_health/plant\\_pest\\_info/fireants?fireantquery.php](http://www.aphis.usda.gov/plant_health/plant_pest_info/fireants?fireantquery.php). If the zip code for the area to be treated does not appear in the APHIS Imported Fire Ant Quarantine zone, you must notify and consult with the county's extension agent prior to treating.

Consult your State or Federal plant protection inspector or your county agent for assistance regarding exact areas under regulation and requirements for moving regulated articles.

Make application with Soil-Directed Air Pressure Application equipment that is capable of applying 12.5 pounds of product per acre.

Do not apply more than 1 application per year of 12.5 pounds of product per acre. Two applications (12.5 lbs/A per application) may only be used on sodfarms within the USDA APHIS Quarantine areas. Do not make more than one application per year of 0.0125 lbs of fipronil/A. Two applications of 0.0125 lbs fipronil/A may be used as a soil directed air pressure broadcast application for the control of Imported Fire Ants Solenopsis spp. on sodfarms within the USDA APHIS Quarantine areas. Calibrate and adjust equipment prior to application to ensure that the proper rate of product will be applied.

\*California: This product can only be used in the Coachella Valley. Applications can only be made from April through September.

			APPLICATION RATE OF CHIPCO CHOICE INSECTICIDE		
SITES	PESTS CONTROLLED	APPROXIMATE LENGTH OF CONTROL	POUNDS PRODUCT PER ACRE	OUNCES PRODUCT PER 1,000 SQ FT	APPLICATION DIRECTIONS
<b>Turfgrass</b> Golf turf Sports fields Commercial lawns Cemeteries Parks Campsites Recreational areas Home Lawns School grounds Sodfarms <b>Landscape beds</b>	Imported Fire Ants [ <i>Solenopsis</i> spp.]	1 year	12.5	4.6	<b>Imported Fire Ants <i>Solenopsis</i> spp.:</b> Make applications to control existing Imported Fire Ant <i>Solenopsis</i> spp. populations and/or to exclude Imported Fire Ant <i>Solenopsis</i> spp. populations. For best results, water or irrigate treated turf after application. Do not apply over impervious surfaces such as but not limited to paved or concrete roads, sidewalks, driveways, walkways, nor broadcast near any storm drains. In areas within the prescribed buffer zone for estuarine or fresh bodies of water as stated in the Environmental Hazards section of this label, applicators may use Maxforce® FC Fire Ant Bait (EPA Reg. No. 101563-111). Refer to the Maxforce® FC Fire Ant Bait label for application information.

### STORAGE AND DISPOSAL

Do not contaminate water, food, or feed by storage or disposal.

#### PESTICIDE STORAGE

Do not store in or around the home. Store unused product in original container only, out of reach of children and animals. NEVER TRANSFER THIS PRODUCT TO ANOTHER CONTAINER FOR STORAGE.

#### PESTICIDE DISPOSAL

Pesticide wastes are acutely hazardous. Improper disposal of excess pesticide is a violation of Federal law. Contamination with this product will render water, food or feed unfit for human or animal consumption. Wastes resulting from the use of this product may be disposed of on site or at an approved waste disposal facility.

#### IN CASE OF SPILL

Sweep up spilled granules, transfer to a marked container, and dispose of wastes on site or at an approved waste disposal facility.

#### CONTAINER HANDLING

**Non-refillable container.** Do not reuse or refill this container. Offer for recycling, if available. Completely empty bag into application equipment. Then dispose of empty bag in a sanitary landfill or by incineration, or if allowed by State and local authorities, by open burning. If container is burned, stay out of smoke.

### IMPORTANT: READ BEFORE USE

Read the entire Directions for Use, Conditions, Disclaimer of Warranties and Limitations of Liability before using this product. If terms are not acceptable, return the unopened product container at once.

By using this product, user or buyer accepts the following Conditions, Disclaimer of Warranties and Limitations of Liability.

**CONDITIONS:** The directions for use of this product are believed to be adequate and must be followed carefully. However, it is impossible to eliminate all risks associated with the use of this product. Crop injury, ineffectiveness or other unintended consequences may result because of such factors as weather conditions, presence of other materials, or the manner of use or application, all of which are beyond the control of Environmental Science U.S., LLC. All such risks shall be assumed by the user or buyer.

**DISCLAIMER OF WARRANTIES:** TO THE EXTENT CONSISTENT WITH APPLICABLE LAW, ENVIRONMENTAL SCIENCE U.S., LLC MAKES NO OTHER WARRANTIES, EXPRESS OR IMPLIED, OF MERCHANTABILITY OR OF FITNESS FOR A PARTICULAR PURPOSE OR OTHERWISE, THAT EXTEND BEYOND THE STATEMENTS MADE ON THIS LABEL. No agent of Environmental Science U.S., LLC is authorized to make any warranties beyond those contained herein or to modify the warranties contained herein. TO THE EXTENT CONSISTENT WITH APPLICABLE LAW, ENVIRONMENTAL SCIENCE U.S., LLC DISCLAIMS ANY LIABILITY WHATSOEVER FOR SPECIAL, INCIDENTAL OR CONSEQUENTIAL DAMAGES RESULTING FROM THE USE OR HANDLING OF THIS PRODUCT.

**LIMITATIONS OF LIABILITY:** TO THE EXTENT CONSISTENT WITH APPLICABLE LAW, THE EXCLUSIVE REMEDY OF THE USER OR BUYER FOR ANY AND ALL LOSSES, INJURIES OR DAMAGES RESULTING FROM THE USE OR HANDLING OF THIS PRODUCT, WHETHER IN CONTRACT, WARRANTY, TORT, NEGLIGENCE, STRICT LIABILITY OR OTHERWISE, SHALL NOT EXCEED THE PURCHASE PRICE PAID, OR AT ENVIRONMENTAL SCIENCE U.S., LLC'S ELECTION, THE REPLACEMENT OF PRODUCT.

Envu and the Envu logo are trademarks and Chipco®, Maxforce® FC Fire Ant Bait and Choice™ are trademarks owned by Environmental Science U.S., LLC or one of its affiliates.

#### NET CONTENTS:

envu™

PRODUCED FOR  
 Environmental Science U.S., LLC  
 5000 CentreGreen Way, Suite 400  
 Cary, NC 27513

