



Healthy roots start with Adept® — proven protection from the ground up

What is Adept® insect growth regulator?

Adept® insect growth regulator (IRAC Code 15) is a highly effective solution for managing fungus gnats, shore flies and foliar-feeding insects in ornamental crops cultivated in greenhouses, shadehouses and interiorscapes. It features a 25% wettable powder (WP) formulation containing the active ingredient diflubenzuron.

How does Adept work?

Adept works by inhibiting chitin biosynthesis, which disrupts the formation of the insect cuticle and the deposition of chitin during molting. This interference prevents larvae from properly developing their exoskeletons. As a result, larvae cannot break through eggshells or die shortly after hatching. Additionally, as larvae grow and feed on treated material, internal pressure on their weakened exoskeletons causes them to rupture before reaching the next developmental stage. However, Adept does not affect adult insects.

General use notes

- + Adept may be applied as a spreng or drench. The product binds rapidly to organic matter, remaining effective despite irrigation.
- + Fungus gnats/shore flies: Rate 2 oz (2 bags)/100 gallons. Initial knockdown occurs in three to five days. Adept provides long residual activity (30–60 days) against soil-inhabiting pests like fungus gnat and shore fly larvae.
- + It can be applied as a soil treatment or foliar spray in commercial greenhouses and similar environments.
- + Tank-mixing is permitted. Growers should test for compatibility and follow all label directions.

Pot diameter (inches)	Drench volume (fl oz/pot)	No. pots treated with 100 gallons
4	2	6,400
5	4	3,200
6	6	2,130
8	10	1,280
10	14	910
12	20	640

Application guidelines

- + Exceeding label rates, volumes or number of applications of Adept® insect growth regulator can cause serious foliar injury to crops.
- + Do not apply Adept to poinsettias, hibiscus or Rieger begonia.
- + Do not reuse potting media that has been treated.
- + Do not apply to plants grown on capillary water mats.
- + Tank-mixing is permitted with Adept. Growers should test for compatibility and make sure to follow all directions and precautions on labels prior to application.

Product attributes

- + Long residual activity (30-60 days) against fungus gnat and shore fly larvae.
- + Excellent fungus gnat and shore fly control.
- + Control of many lepidopteran pests when used as a foliar spray.
- + Low use rates.
- + Little to no effect on beneficial insects and mites.

Insects managed

- + Fungus gnats
- + Shore flies
- + Armyworms
- + Leafminers (lepidopteran)
- + Whiteflies (suppression)

Labeled use sites

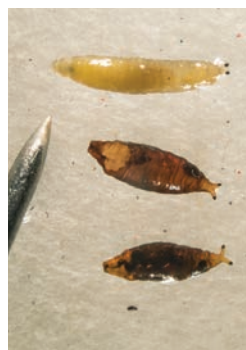
- + Enclosed commercial greenhouses
- + Shadehouses
- + Interiorscapes



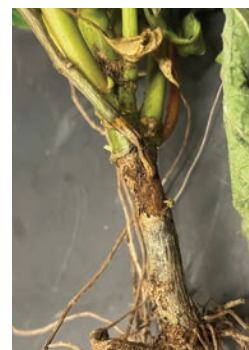
Fungus gnat larvae
Photo courtesy of Bugwood.org



Fungus gnat (*Bradysia* spp.)
Photo courtesy of Bugwood.org



Shore fly larvae
Photo by Dr. Cliff Sadof



Shore fly larvae damage
Photo by Dr. Cliff Sadof

ALWAYS READ AND FOLLOW LABEL INSTRUCTIONS.

Environmental Science U.S. LLC, 5000 CentreGreen Way, Suite 400, Cary, NC 27513. For additional product information, call toll-free 1-800-331-2867. www.envu.com. Not all products are registered in all states. Adept®, Envu and the Envu logo are trademarks owned by Environmental Science U.S. LLC or one of its affiliates. ©2025 Environmental Science U.S. LLC.

