



Unleash the Power of Savate: Defend Your Greenhouse Space.

What is Savate?

Savate® is a highly effective contact and translaminar miticide/insecticide specifically formulated to control multiple families of mites that feed on ornamental crops in greenhouses, shade houses, and field production. Savate also controls whiteflies, including glasshouse (*Trialeurodes vaporariorum*), sweet potato (*Bemisia tabaci*) and many other whitefly species.

With fast knockdown activity and long residual control, Savate protects against mites and whiteflies, including most populations resistant to other chemistries.

How does Savate work?

Savate works by inhibiting lipid biosynthesis in pests, preventing mites and whiteflies from retaining proper water levels, which leads to their dehydration and death. It effectively targets all developmental stages of these pests and provides residual control for up to 30 days.

Application Guidelines

Thorough coverage of all plant parts is required for optimum performance. Performance evaluations should be made 4 – 10 days after application. For best results good coverage of the upper and lower leaf surfaces is recommended. An adjuvant may be used to improve coverage on hard-to-wet foliage. For best results the treatment should be made when whitefly or mite population begins to build and before a damaging population becomes established.

General Use Notes

IRAC Code: 23

REI: 12 hr

Savate is a foliar spray that targets:

- Spider mites (multiple species of Tetranychidae)
- Broad mites, cyclamen mite (Tarsonemidae)
- Eriophyid mites
- Flat mites (Tenuipalpidae)
- Multiple species of whiteflies
- Provides knockdown and residual control for up to 28 days per application.

Rate per 100 gal

Mites 1- 4 fl oz

White flies 2-4 fl oz

Effective Across All Life Stages – Controls nymphs, larvae, and adults of mites and whiteflies.

IPM-Compatible – Soft on many beneficial insects when used as directed.

Site: Ornamental plants, flowers and foliage plants in the greenhouse and field and container nurseries

PPE:

- Coveralls worn over short sleeved shirt and short pants.
- Chemical resistant gloves (such as natural rubber, EPA selection category A)

Restrictions

Do not use Savate on geraniums (*Pelargonium sp.*), Peperomia, Dracaena, and 'Classy', 'Attache', or 'Vogue' varieties of rose. Do not apply more than 2 fl oz per 100 gal per application or 4 fl oz per cropping cycle to chrysanthemum, Shasta daisy, snapdragon, impatiens, verbena, lantana, gerbera daisy, or marigolds.

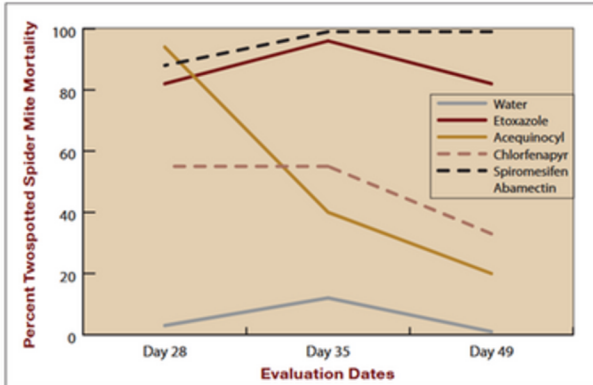


Figure 2. Mean percent twospotted spider mite, (*Tetranychus urticae*) nymphal mortality for all miticide treatments 28, 35 and 49 days after marigold (*Tagetes erecta*) plants had been artificially infested with twospotted spider mites.

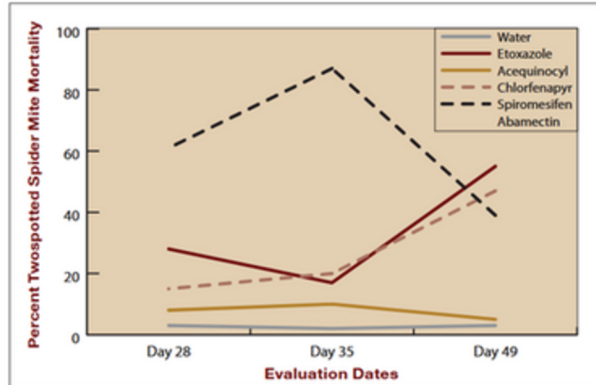
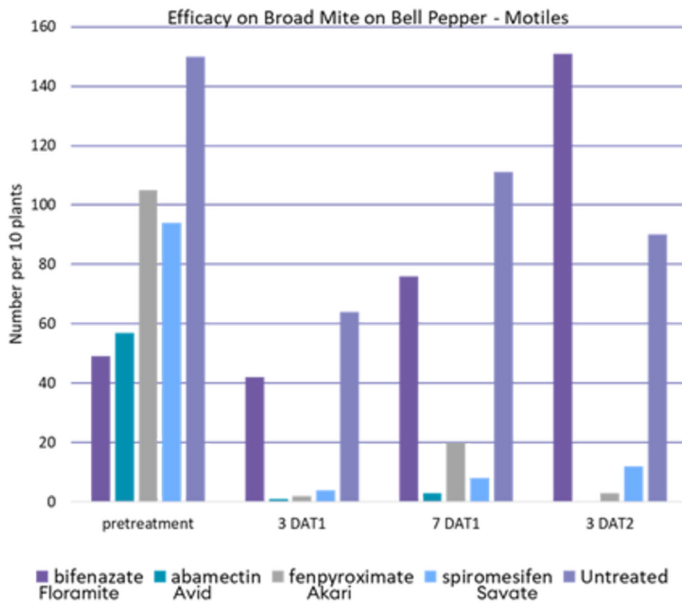


Figure 3. Mean percent twospotted spider mite, (*Tetranychus urticae*) adult mortality for all miticide treatments 28, 35 and 49 days after marigold (*Tagetes erecta*) plants had been artificially infested with twospotted spider mites.

Data from Cloyd, 2008.



ALWAYS READ AND FOLLOW LABEL INSTRUCTIONS

Environmental Science U.S. Inc., 5000 CentreGreen Way, Suite 400, Cary, NC 27513. For additional product information, call toll-free 1-800-331-2867. www.envu.com. Please verify state registration of these products in your state before selling, using or distributing. Not all products are registered in all states. Envu, the Envu logo, and product logos are trademarks owned by Environmental Science U.S. LLC or one of its affiliates. Other trademarks are the property of their respective owners. ©2025 Environmental Science U.S. LLC.

